

## WHEN YOU HAVE A NEIGHBOR WITH AN ASSISTANCE ANIMAL...

An assistance animal is at work most of the time. So, unless the owner gives permission:



### **DON'T**

- Pet
- Attempt to Feed
- Talk to, or otherwise interact with an assistance animal.

For more information about these important and hard-working animals:

- Ask the animal's owner
- Use the internet or library to get information on auxiliary aids such as seeing-eye dogs and hearing-ear dogs
- Consult organizations for persons who are blind or have hearing loss, or have mobility impairments, for information about these animals and how they are trained.

## How do I get permission to keep an assistance animal?

In order to keep an assistance animal, you must be approved for a reasonable accommodation.

### How do you request an Accommodation?

1. Ask your Occupancy Interviewer, Section 8 Technician, or Manager for Form #1 - Request for Accommodation and Form #2 - Health Care Provider Verification.
2. Have your Health Care Provider complete Form #2 - Health Care Provider Verification form.
3. Send both the completed Request for Accommodation and Health Care Provider Verification forms to the Meichell Walsh, 504 Coordinator, 777 Grant St., 4th Floor, Denver, Colorado 80203
4. You will be notified in writing whether your request has been approved or denied.

## WHAT IS AN ASSISTANCE ANIMAL?

An assistance animal may look like a pet, but it is not. It is an animal that is specifically trained to assist a person with a disability so they can safely live in their home, work, shop and travel.



These animals (often dogs but also cats and other specially trained animals) are linked directly to the specific need of a person with a disability. For example, a seeing-eye dog assists a person who has a visual impairment, a hearing-ear animal assists a person who is hearing impaired, a physical support dog assists a person who has a physical disability and an emotional support animal assists a person who has a mental impairment.

The link between the individual's disability and the assistance animal is important. If there is no direct link between the individual's disability and the animal, the animal is not an assistance animal and will be considered a pet. If a tenant wants to maintain a pet, the tenant must comply with one of DHA's two pet policies: 1) Elderly/ Disabled Developments Pet Policy, or 2) Family Housing Pet Policy; however, these policies do not apply to assistance animals.



### Question?

#### What are the responsibilities of the owner of an assistance animal?

The owner must keep the animal clean, in good health, and follow all rules to ensure it does not present a safety or sanitation risk.

Assistance animals are trained to work and are selected for their intelligence and mild temperament. These animals may not harm or show undue aggression toward others.



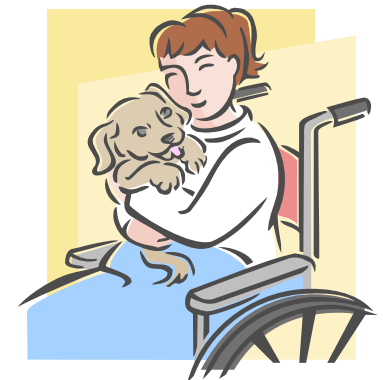
#### How does a DHA determine the difference between an assistance animal and a pet?

The family member must be a qualified person with a disability *and* the assistance animal must provide a service that is directly connected to the disability.

For example, a *seeing-eye dog* helps a man who is blind to safely cross a street, a *hearing-ear cat* jumps on the bed to awaken a deaf woman when the alarm clock sounds,

an *independence monkey* brushes the teeth of a teenager who can not use their arms, and a child who has behavioral problems may be given the responsibility of caring for a hamster as part of her counseling treatment.

**ALL INFORMATION IS KEPT CONFIDENTIAL TO THE EXTENT PERMITTED BY LAW.**



DHA will request evidence to demonstrate that the animal has been trained as an assistance animal.